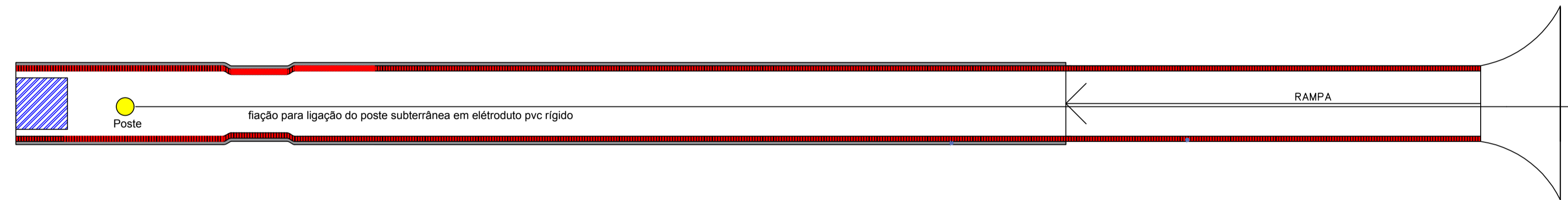
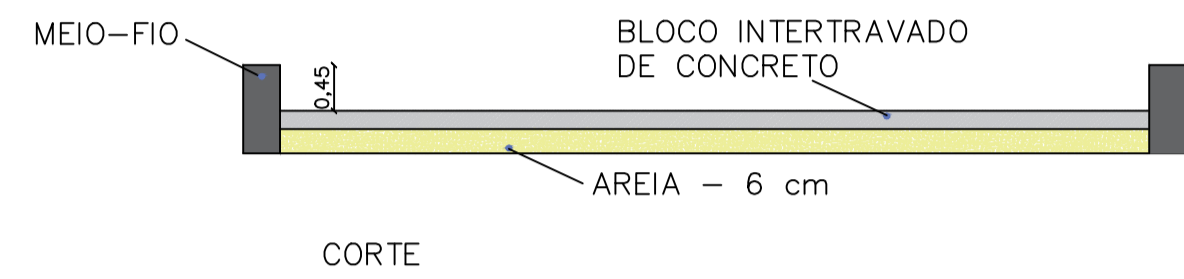
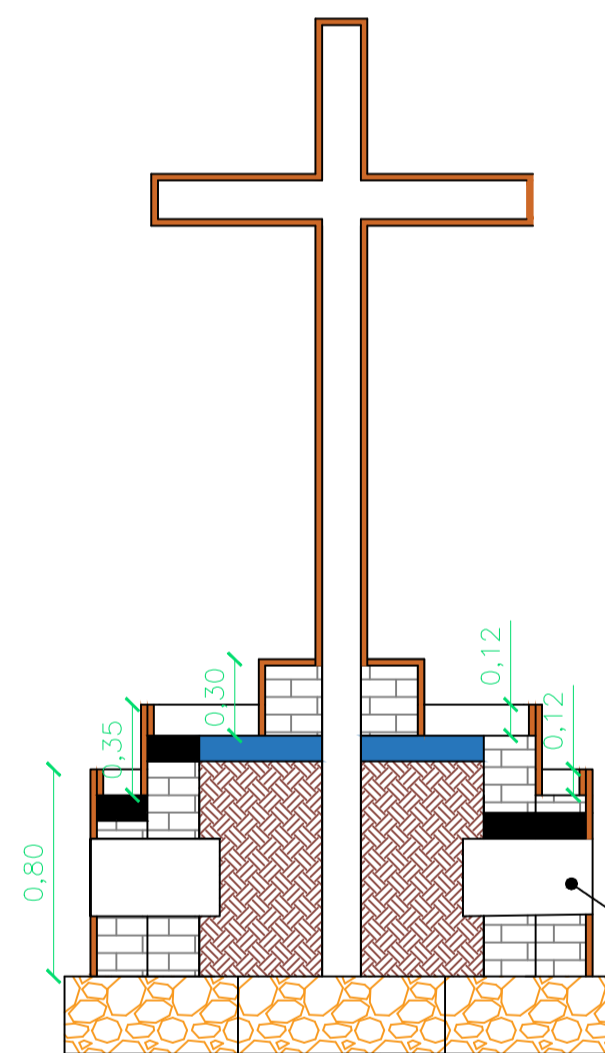
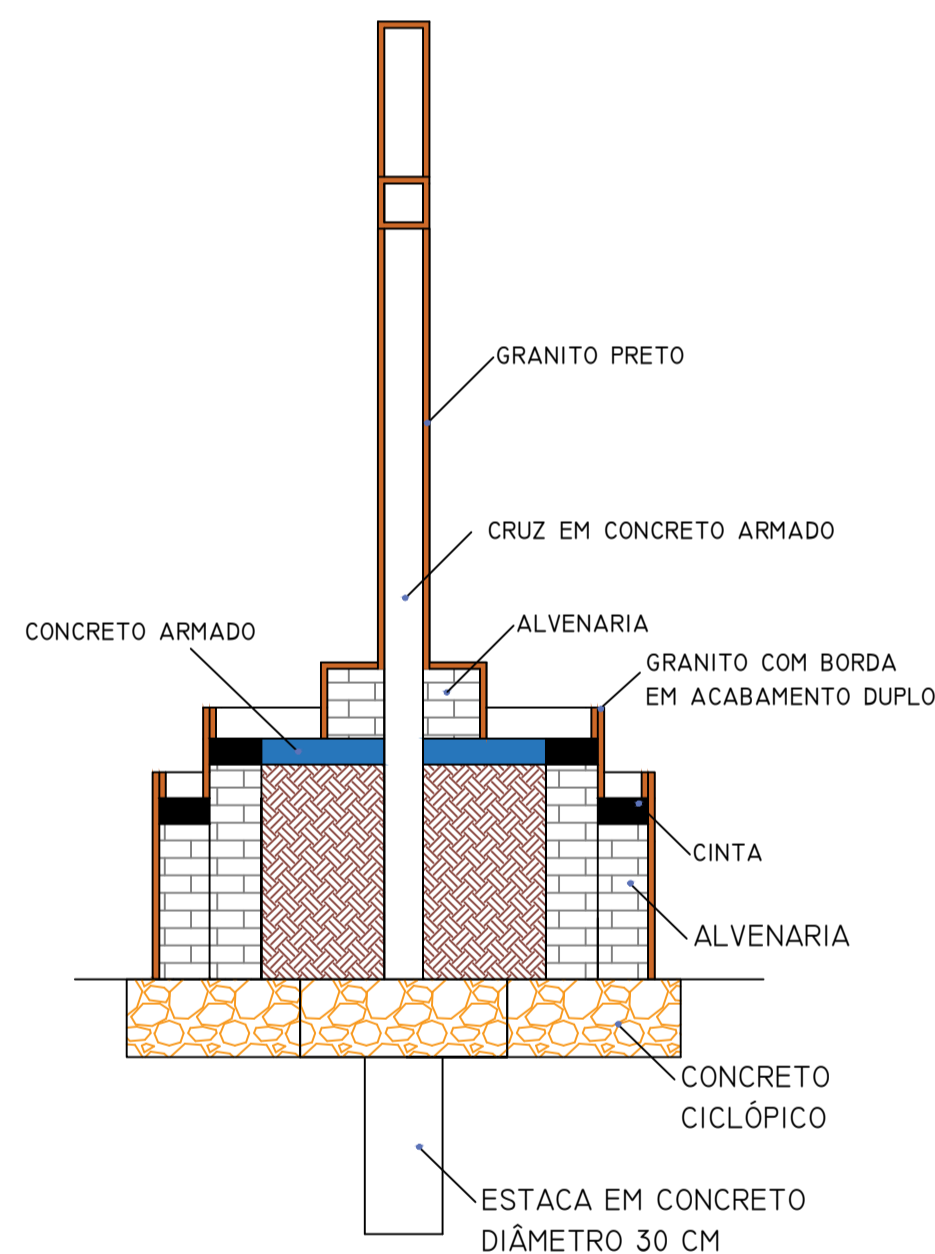
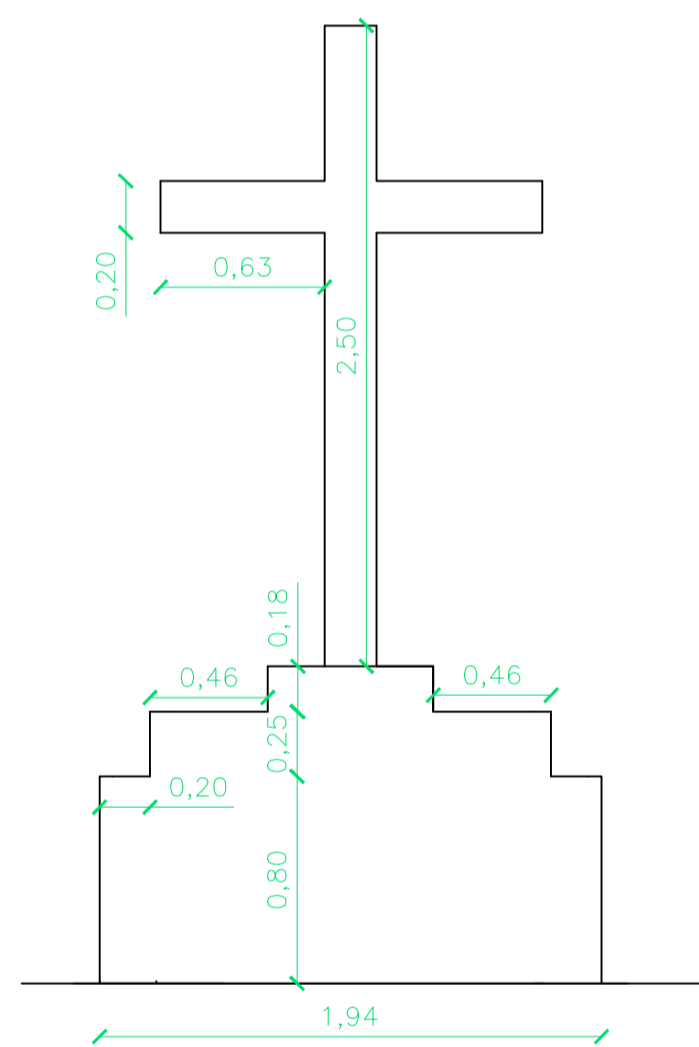


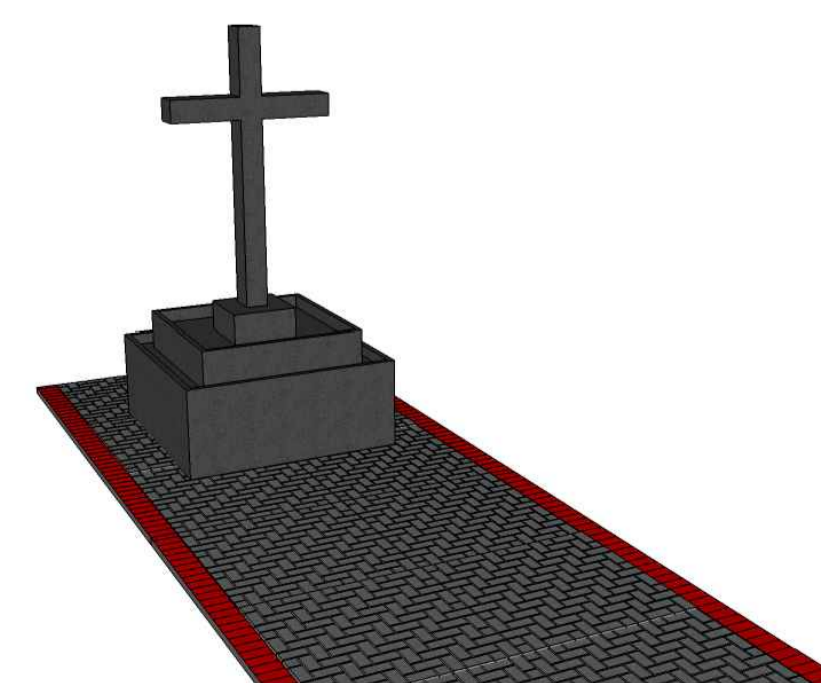
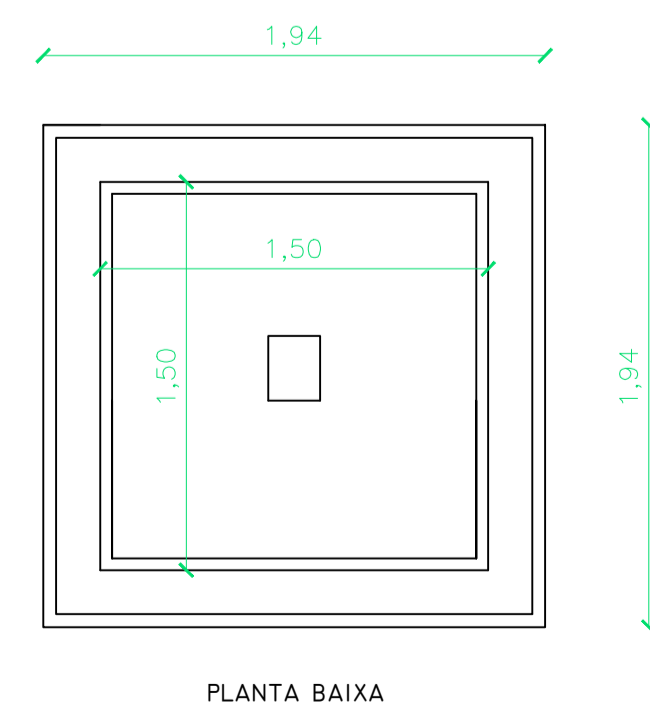
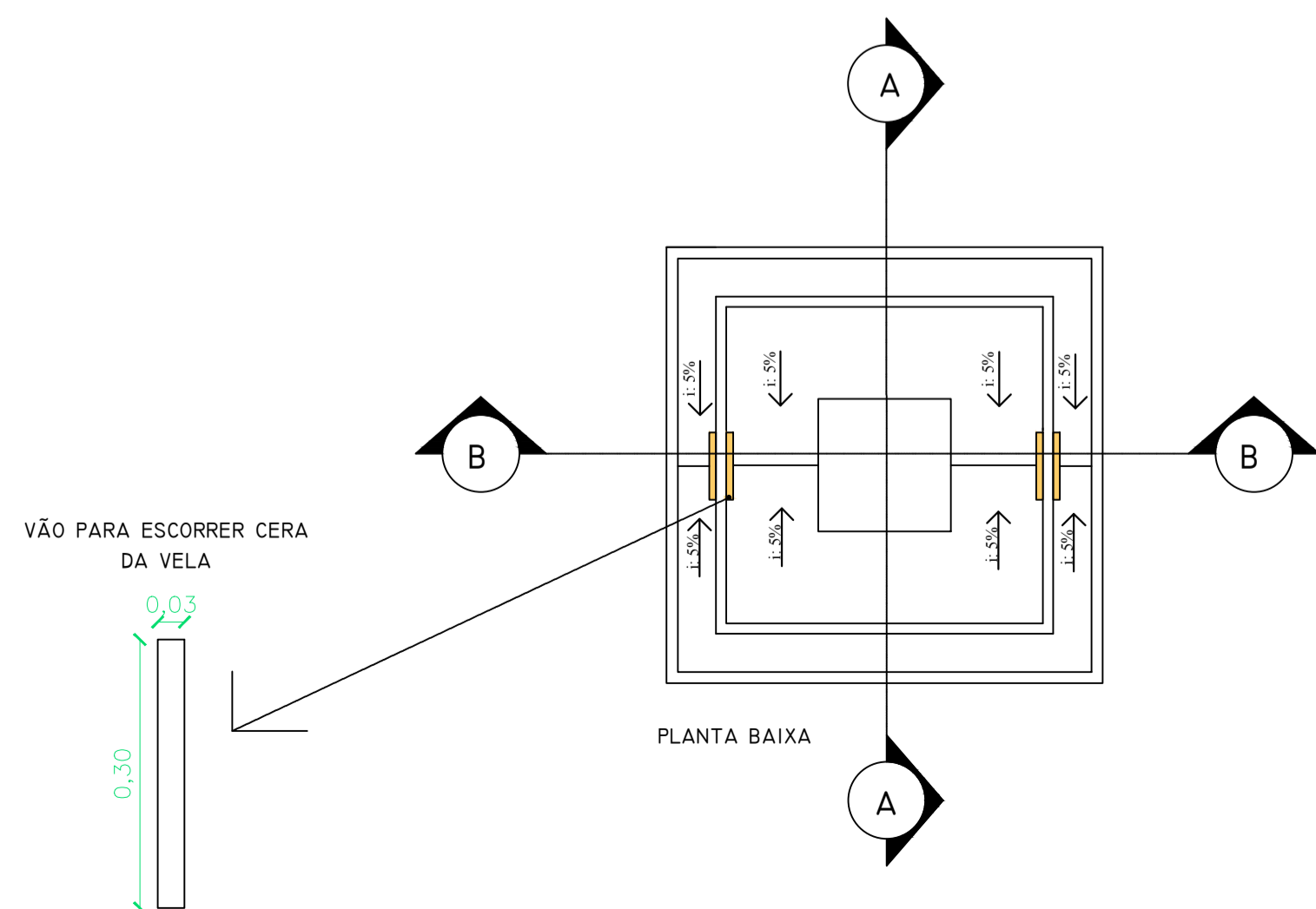
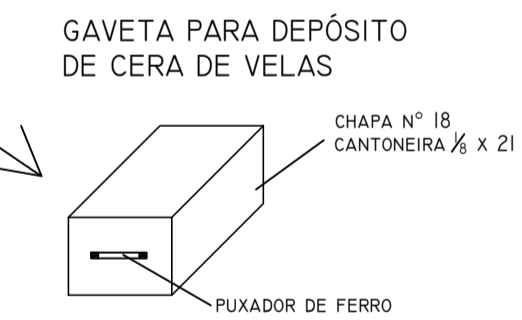
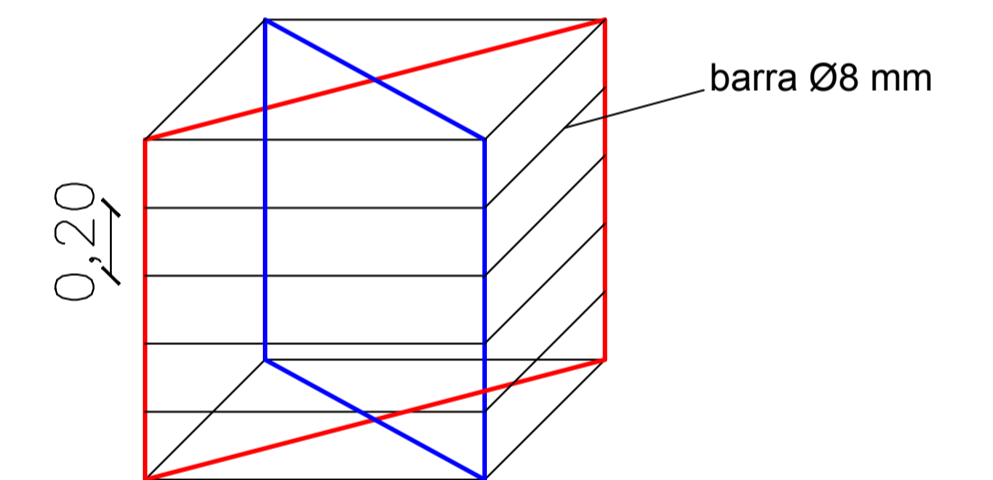
- LEGENDA:**
- LOCAÇÃO DO CRUZEIRO
 - BLOCO INTERTRAVADO DE CONCRETO CHUMBO - PAGINAÇÃO ESPINHA DE PEIXE
 - BLOCO INTERTRAVADO DE CONCRETO VERMELHO



PERSPECTIVA I



DETALHE DO BLOCO DE CONCRETO, BASE PARA POSTE DE ILUMINAÇÃO ALTURA 10 METROS
Dimensão do bloco 1x1x1



PERSPECTIVA I

DEPARTAMENTO MUNICIPAL DE ENGENHARIA	
PREFEITURA MUNICIPAL DE TENENTE PORTELA	
REVITALIZAÇÃO DO CEMITÉRIO MUNICIPAL	ÁREA CONSTRUIDA: 127,75 m ²
PLANTAS GERAIS	DATA: AGOSTO/2020
COLABORAÇÃO: FERNANDA HERMES SOARES	
Engenheiro Civil ELIANDRO TIECKER	
Resp. Técnico	Prefeito Municipal
ESCALA: S/E	PRANCHA: 01/01