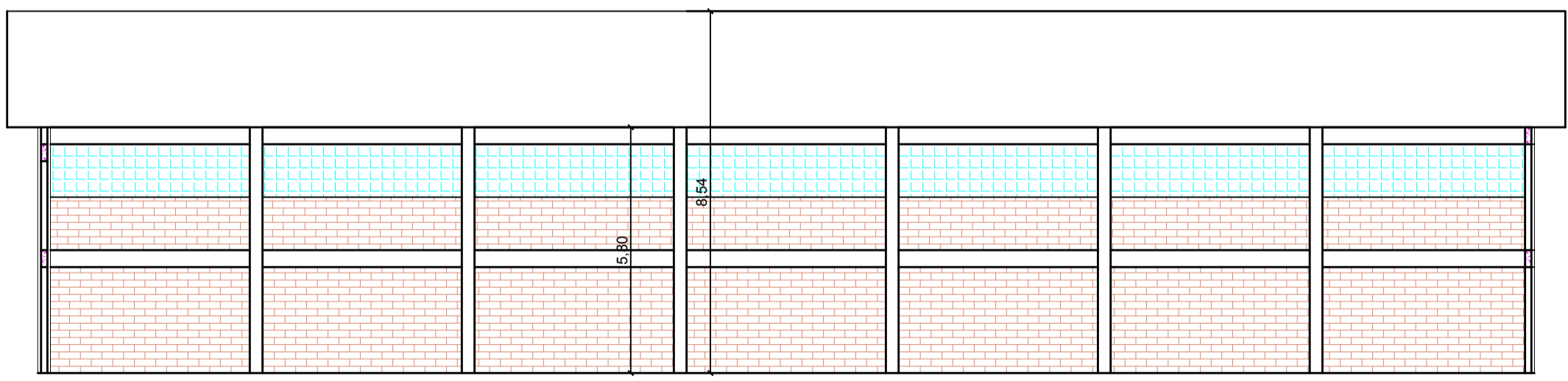
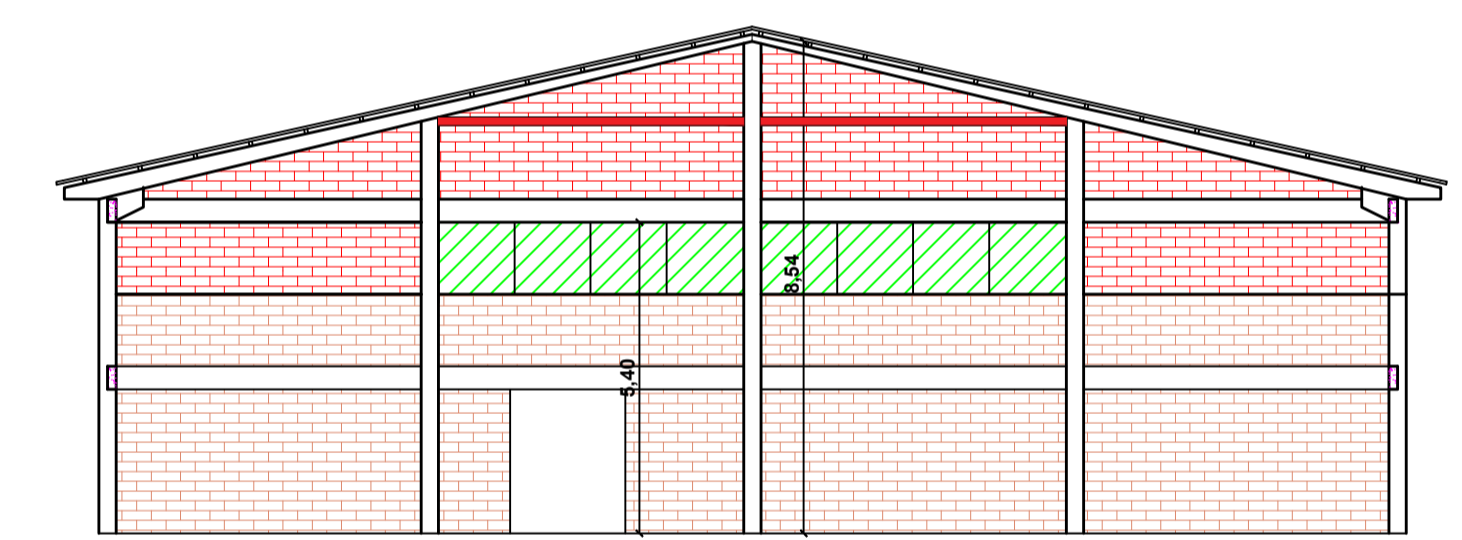
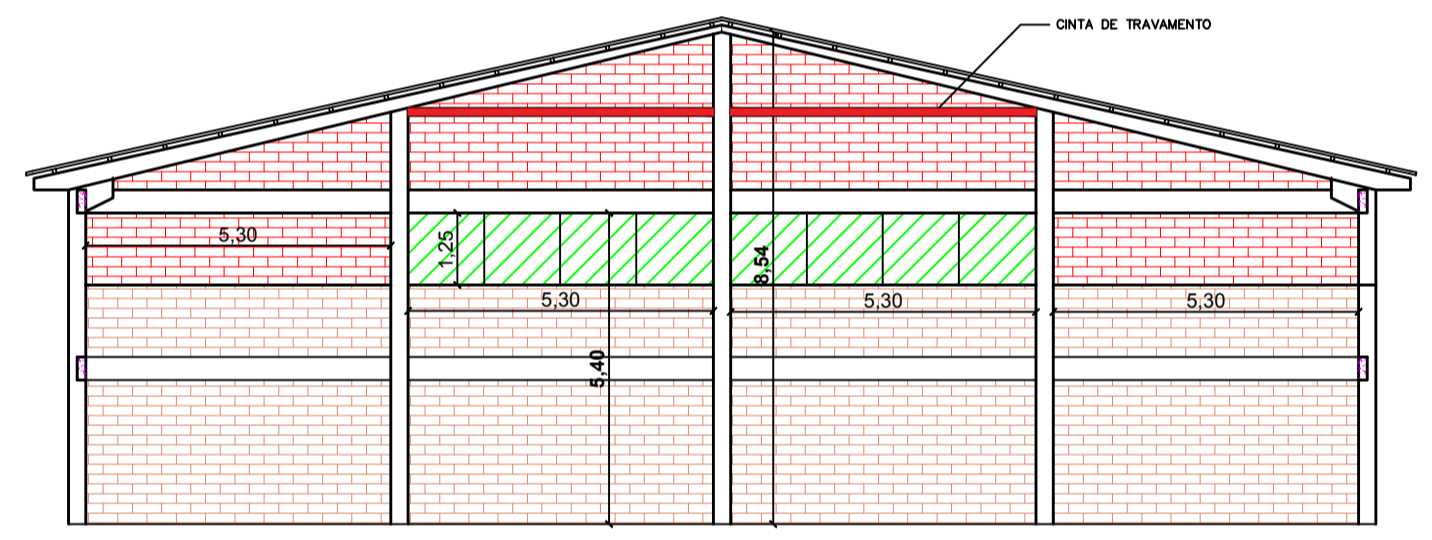
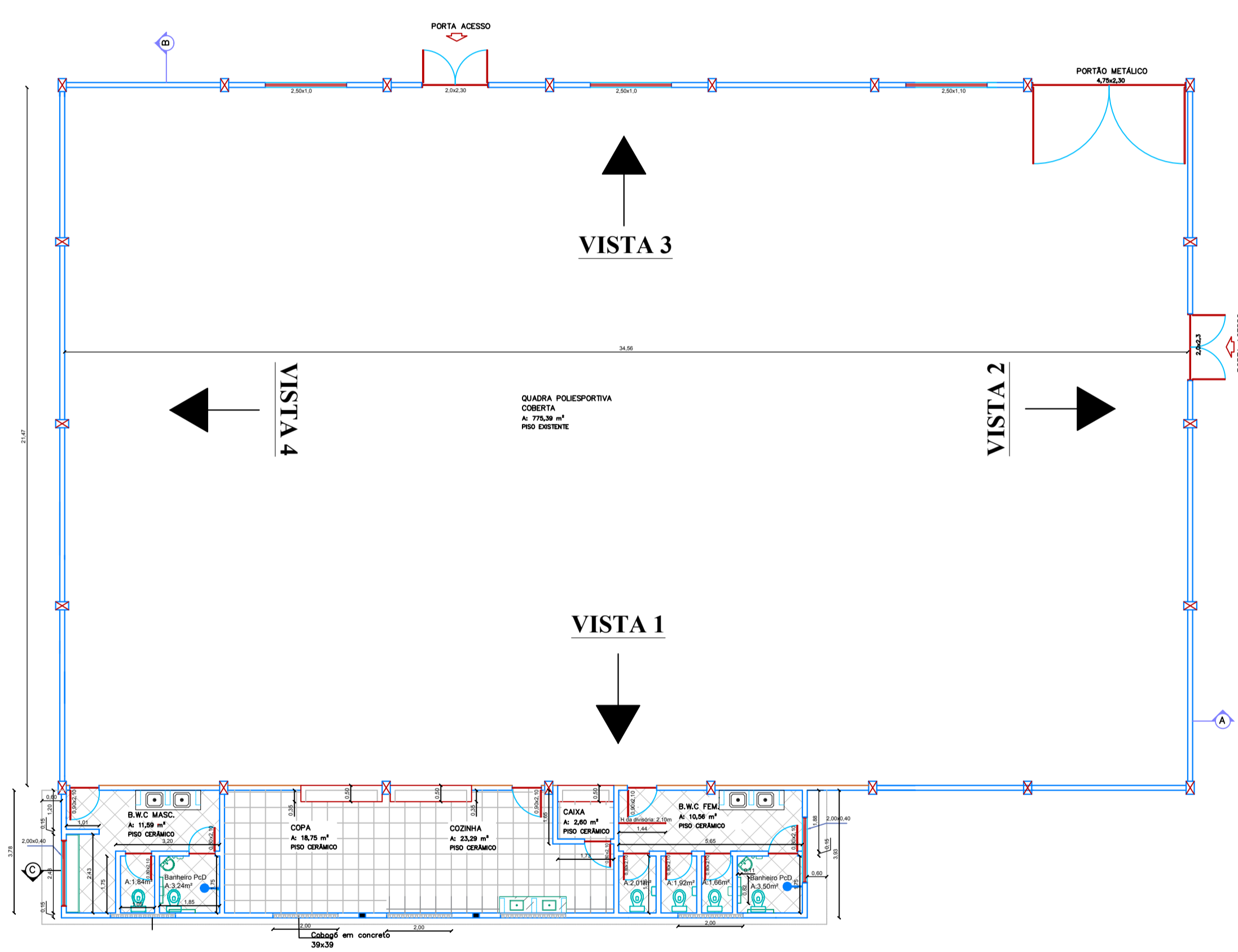
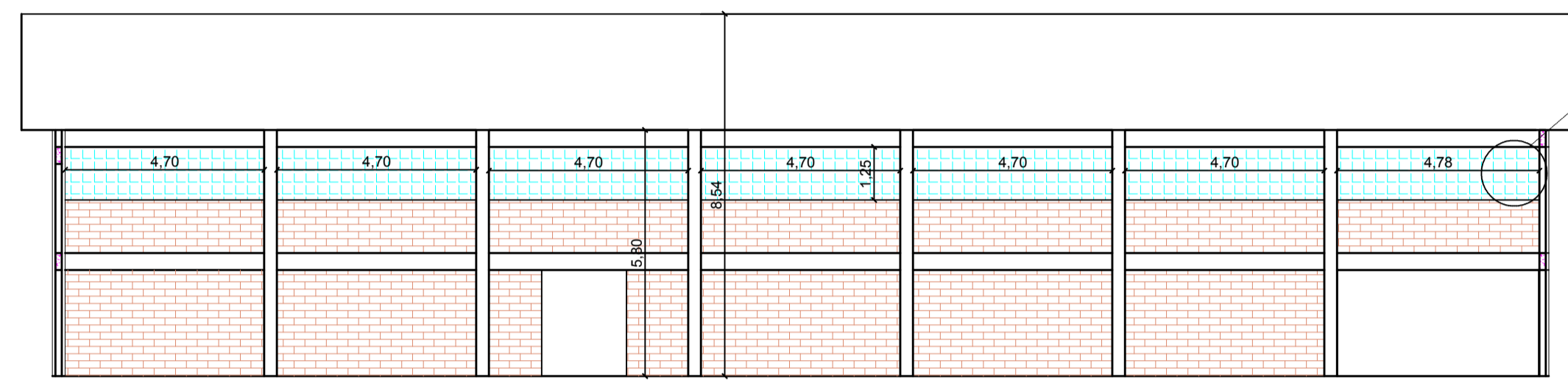


LEGENDA:

	Alvenaria existente
	Cobogó à executar
	Janela
	Alvenaria à construir



DEPARTAMENTO MUNICIPAL DE ENGENHARIA	
PROPRIETÁRIO: PREFEITURA MUNICIPAL TENENTE PORTELA	
PROJETO: FECHAMENTO QUADRA POLIESPORTIVA ALTO ALEGRE	ÁREA: 746,00 m <sup>2</sup>
LOCAL: ESCOLA MUNICIPAL MARCÍLIO DIAS	DATA: MARÇO/2020
COLABORAÇÃO: FERNANDA HERMES SOARES	
RESPONSÁVEL TÉCNICO: ELIANDRO TIECKER	REGISTRO CREA: RS180283
ASSINATURA:	ESCALA: S/E PRANCHA: 01/01
Responsável Técnico	Proprietário