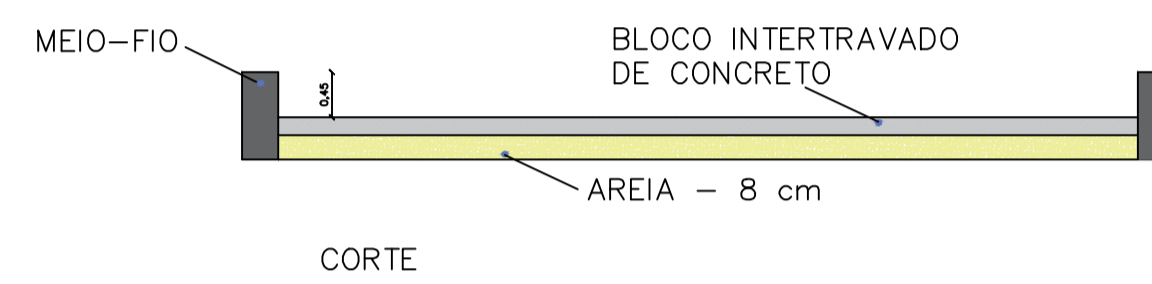


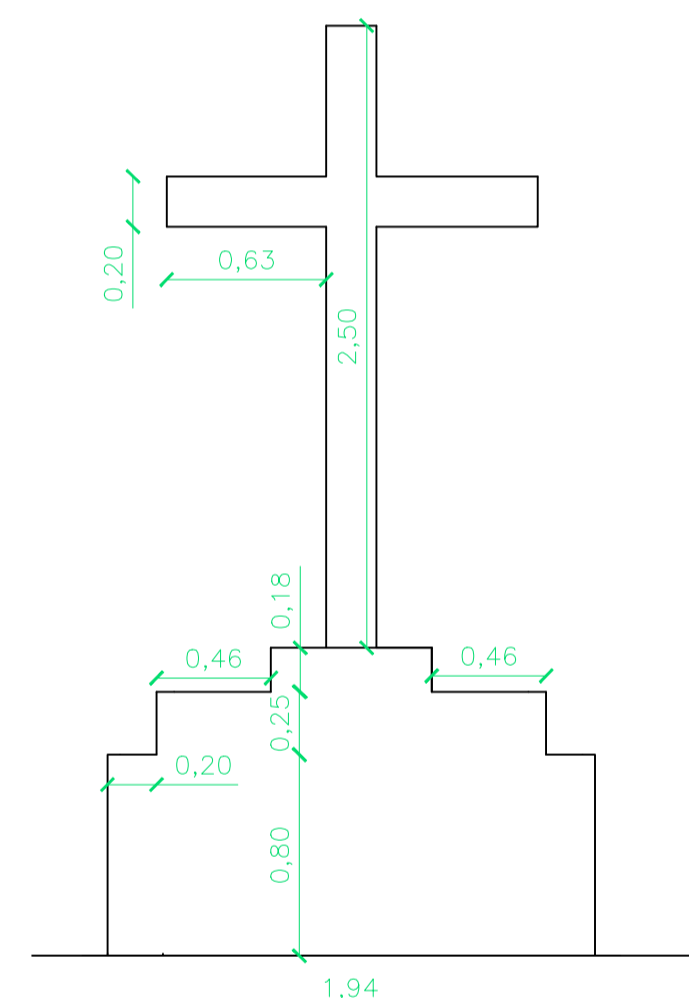
LEGENDA:

- LOCAÇÃO DO CRUZEIRO
- BLOCO INTERTRAVADO DE CONCRETO CHUMBO – PAGINAÇÃO ESPINHA DE PEIXE
- BLOCO INTERTRAVADO DE CONCRETO VERMELHO

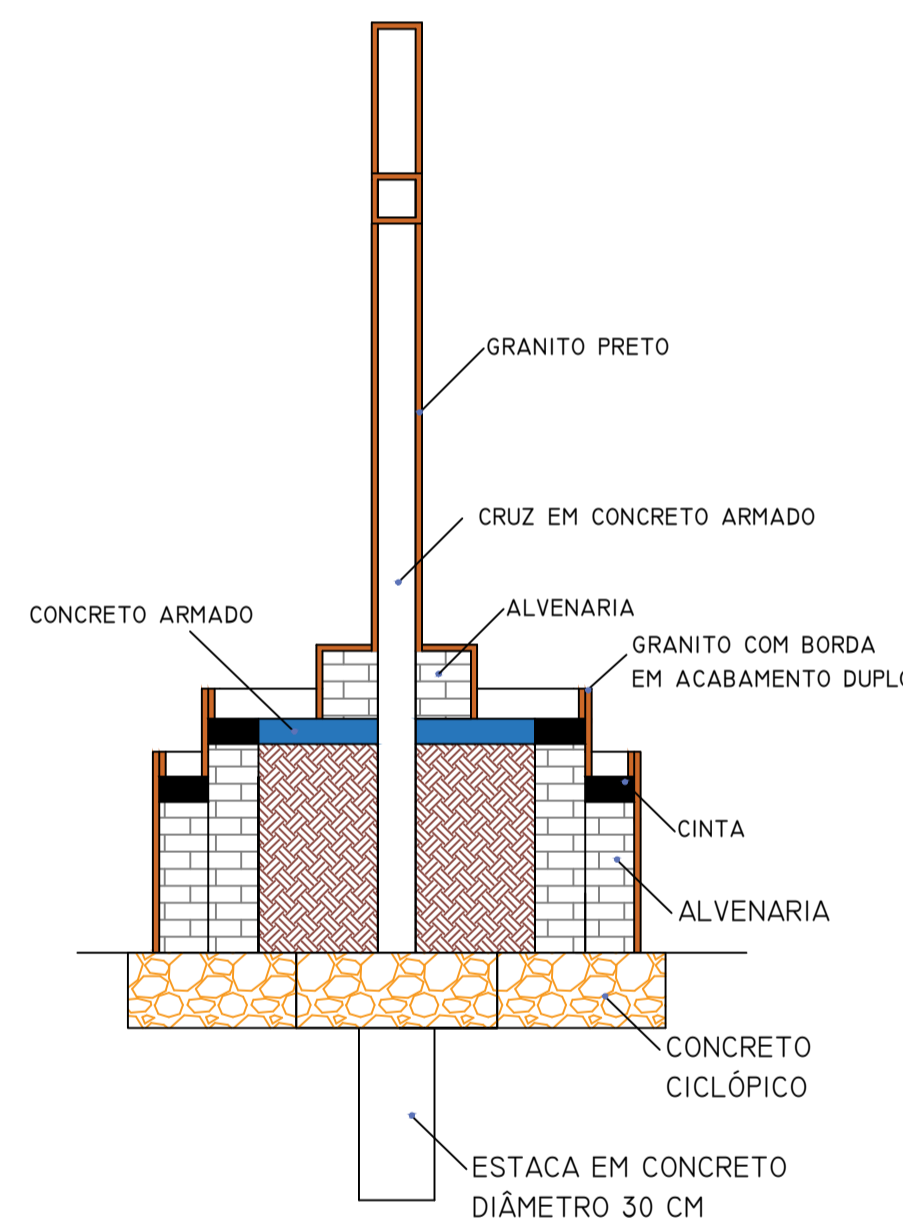
ÁREA DE BLOCO INTERTRAVADO DE CONCRETO 127,75 m²



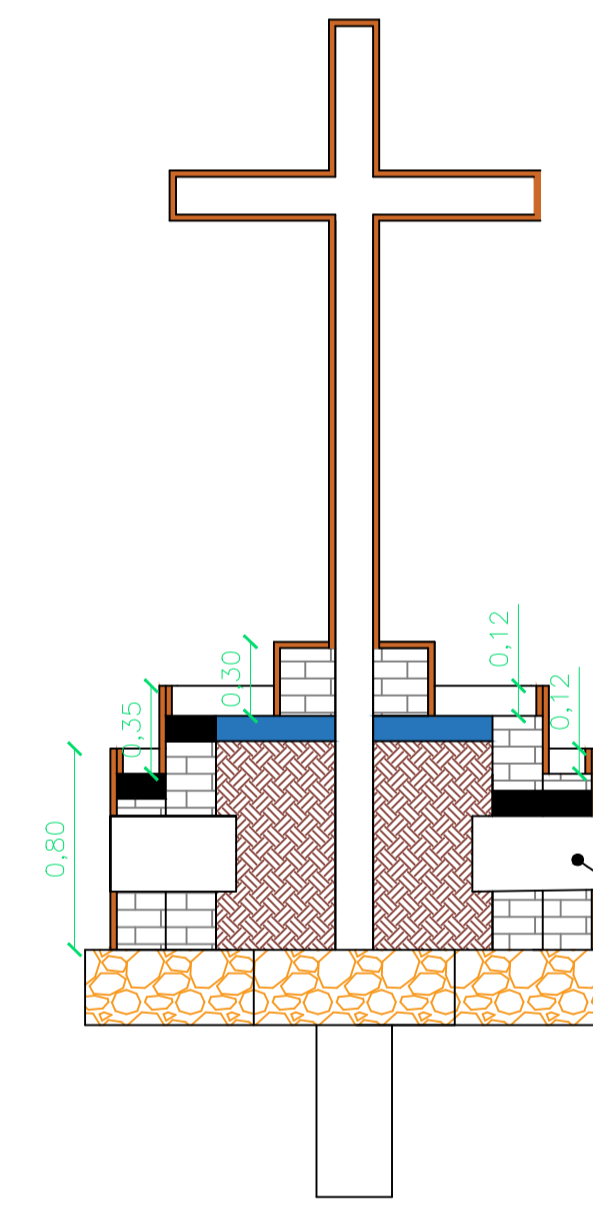
PERSPECTIVA I



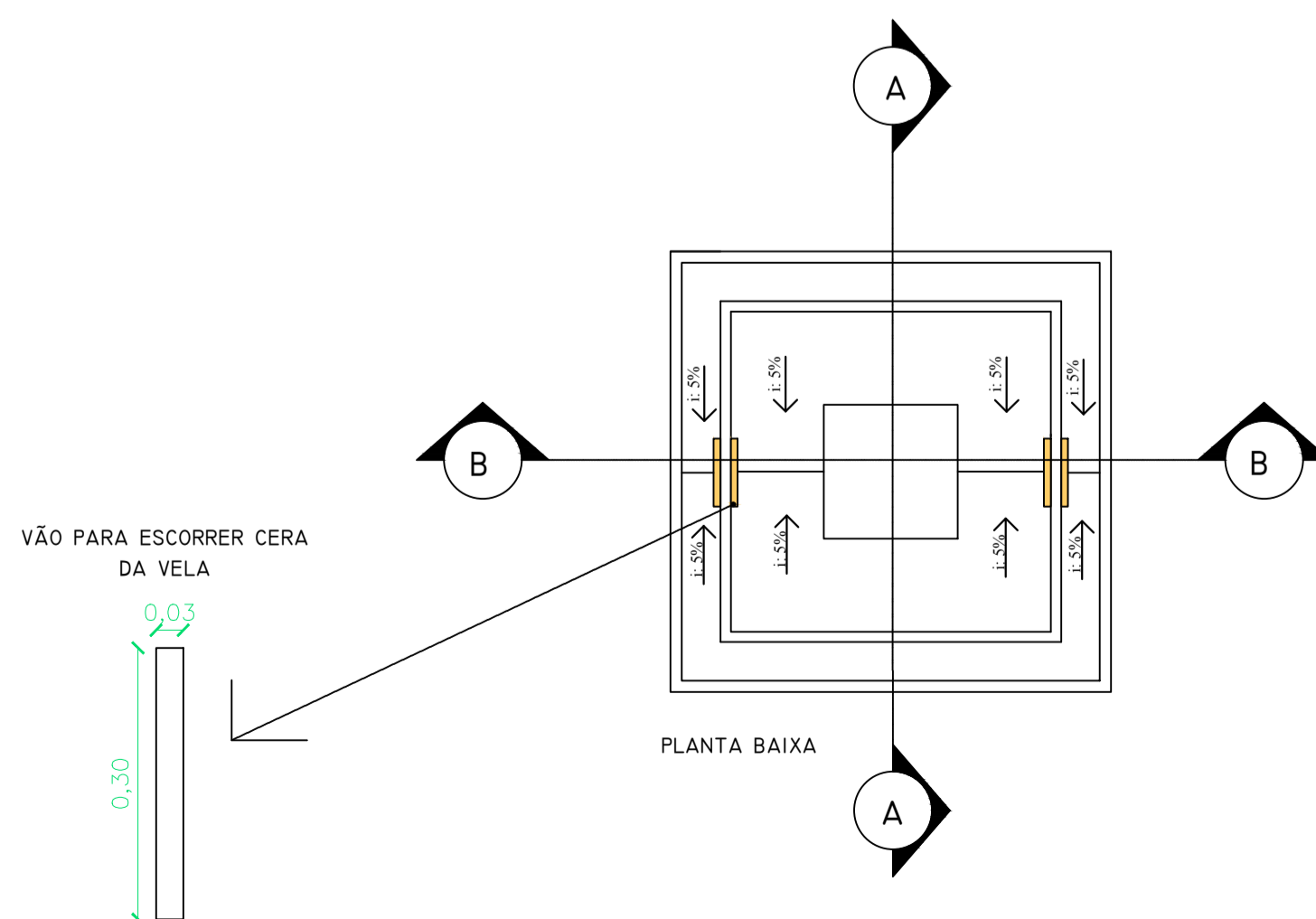
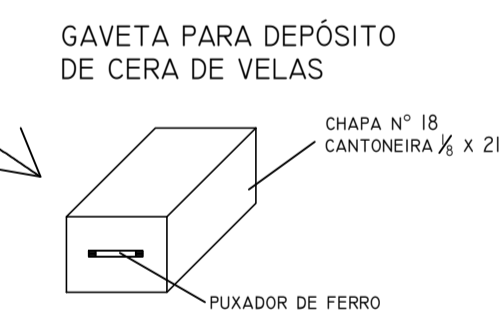
VISTA FRONTAL



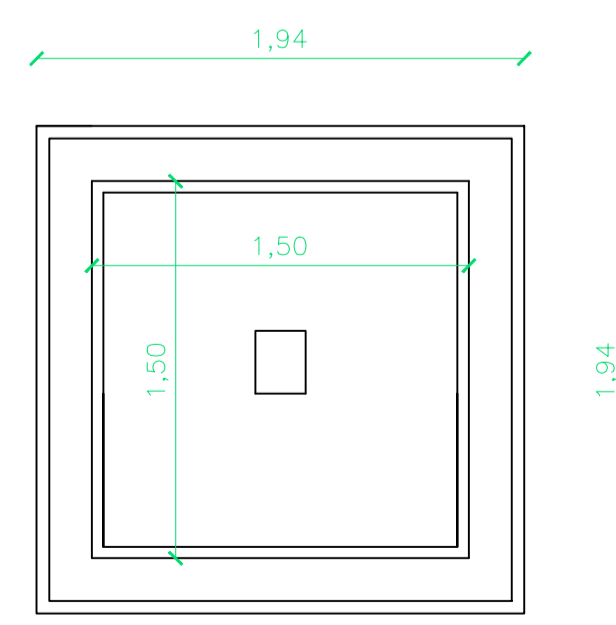
CORTE A-A



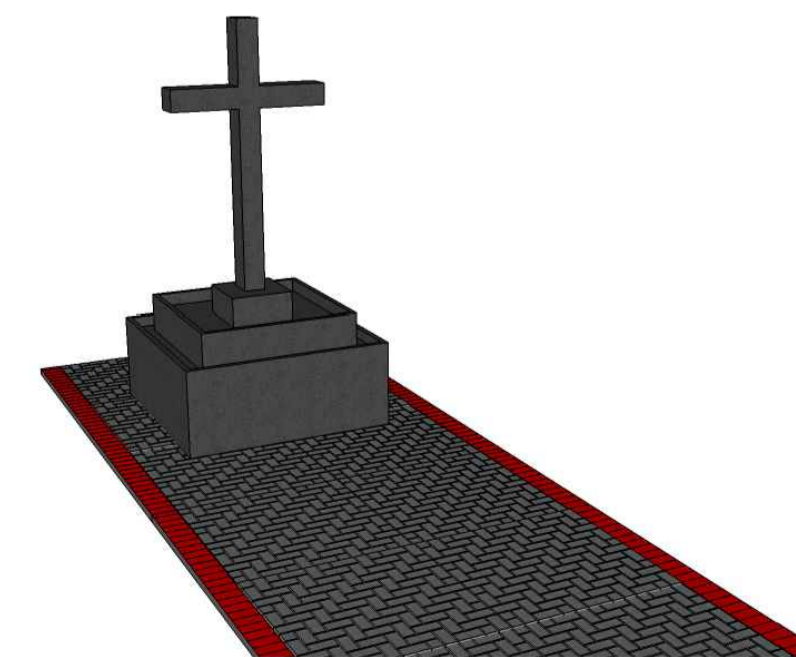
CORTE B-B



PLANTA BAIXA



PLANTA BAIXA



PERSPECTIVA I



DEPARTAMENTO MUNICIPAL DE ENGENHARIA

PREFEITURA MUNICIPAL DE TENENTE PORTELA

REVITALIZAÇÃO DO CEMITÉRIO MUNICIPAL

ÁREA CONSTRUÍDA:
127,75 m²

PLANTAS GERAIS

DATA:
setembro/2019

Engenheiro Civil

ELIANDRO TIECKER

COLABORAÇÃO:
FERNANDA SOARES

Resp. Técnico

Prefeito Municipal

ESCALA:
S/E

PRANCHA:
01/01