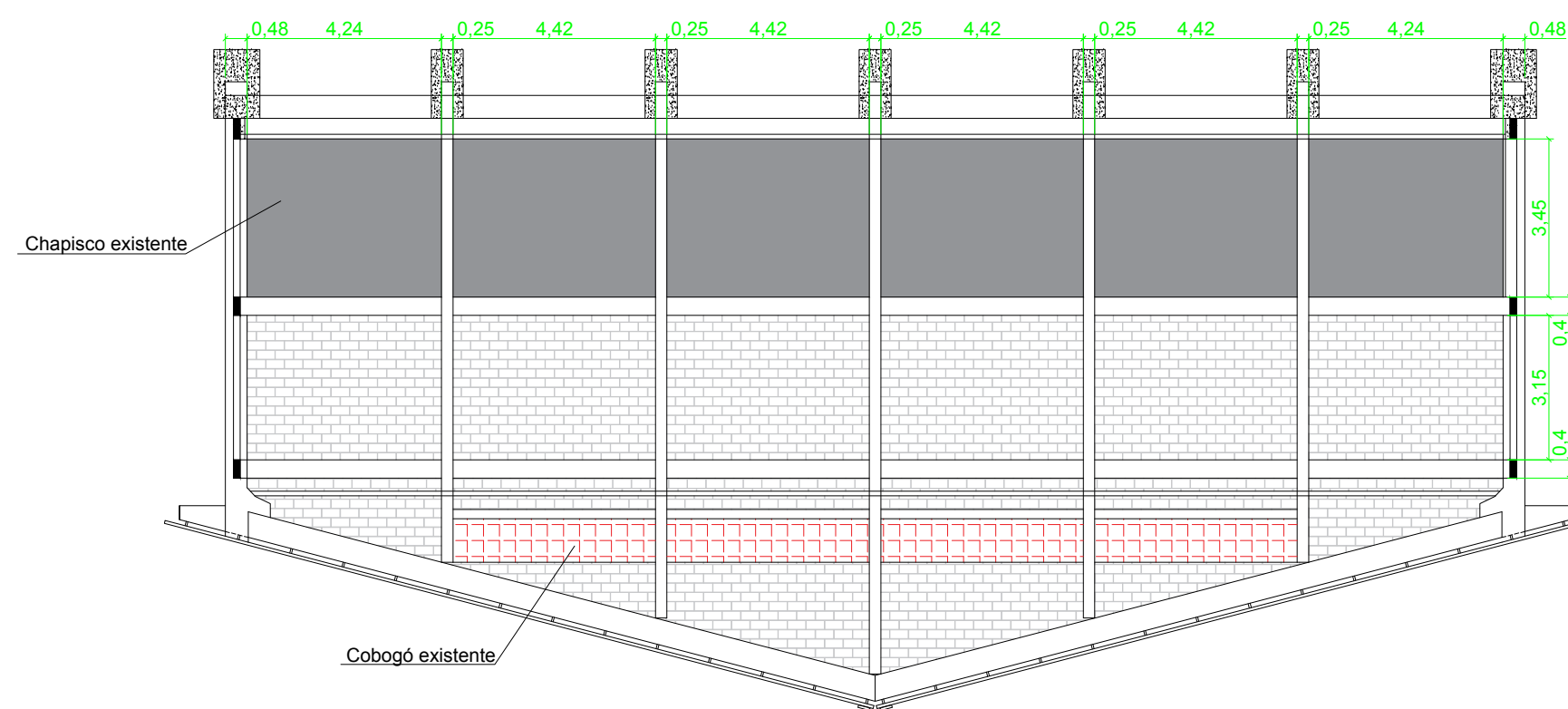
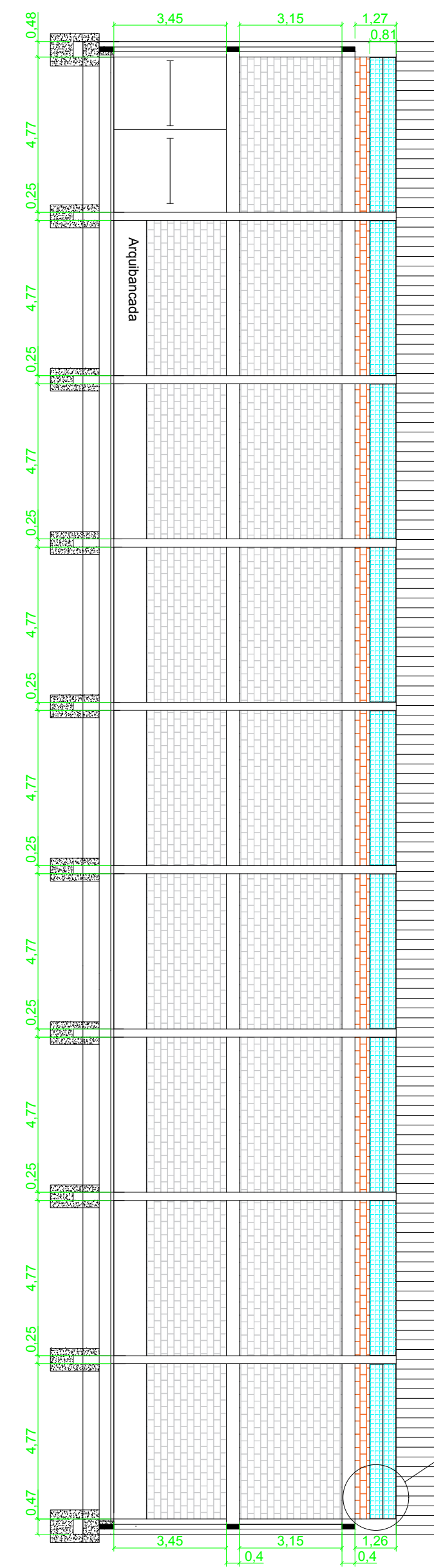
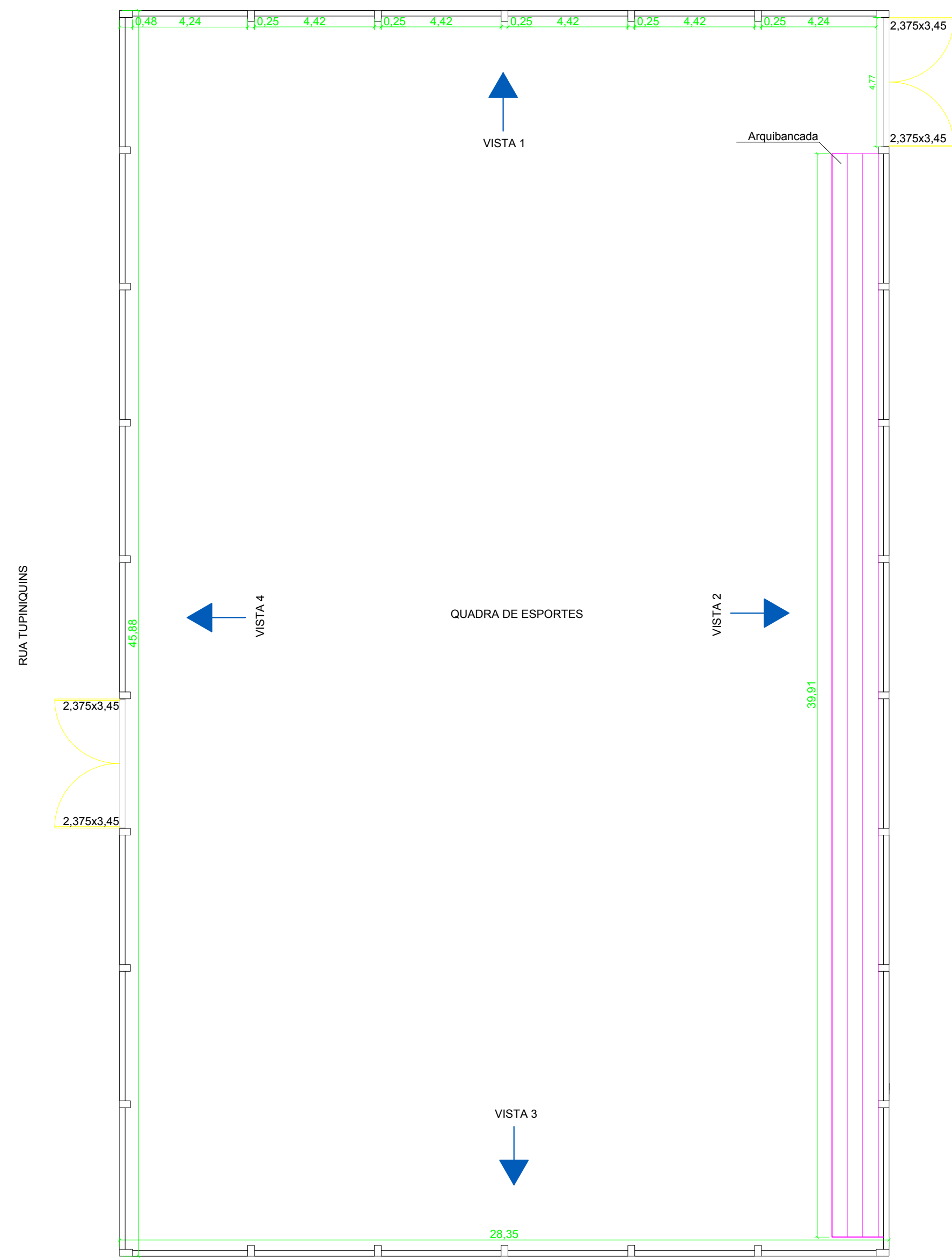
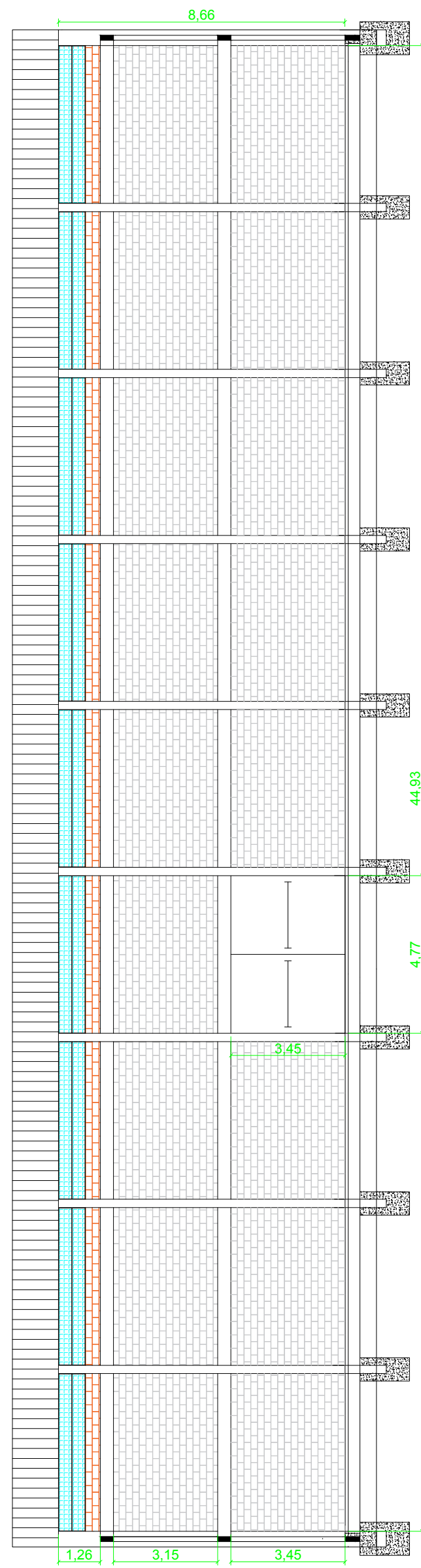
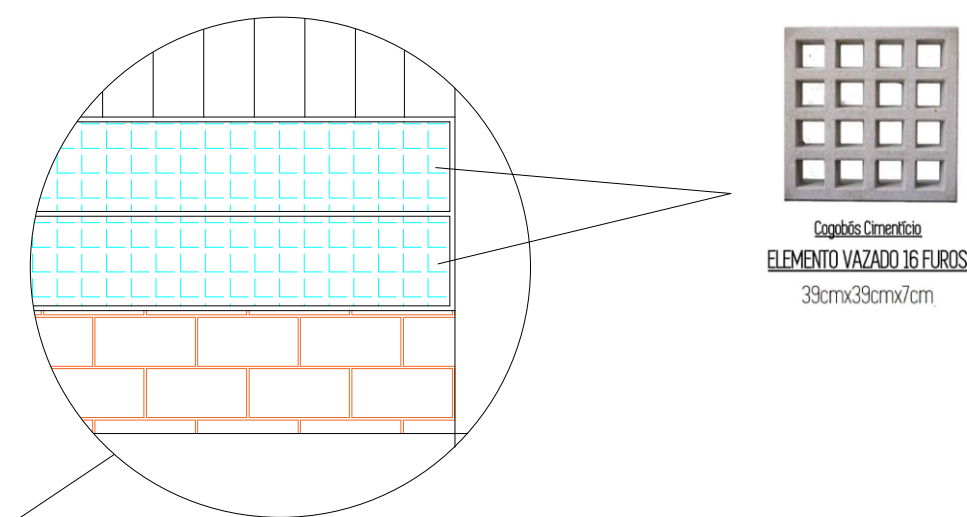


RUA ANHANGABAÚ



LEGENDA:	
	Alvenaria existente
	Alvenaria à executar
	Cobogó à executar
	Chapisco existente
	Cobogó existente



DEPARTAMENTO MUNICIPAL DE ENGENHARIA			
PROPRIETÁRIO: PREFEITURA MUNICIPAL TENENTE PORTELA			
PROJETO: FECHAMENTO QUADRA POLIESPORTIVA MIRAGUAY		COLABORAÇÃO: Bruna Meneghetti	
LOCAL: Esquina com as ruas Tupiniquins e Anhangabaú		DATA: AGO/2019	
RESPONSÁVEL TÉCNICO: Eliandro Tiecker			
ASSINATURA:		ESCALA: S/E	PRANCHA: 01/01
Responsável Técnico		Proprietário	