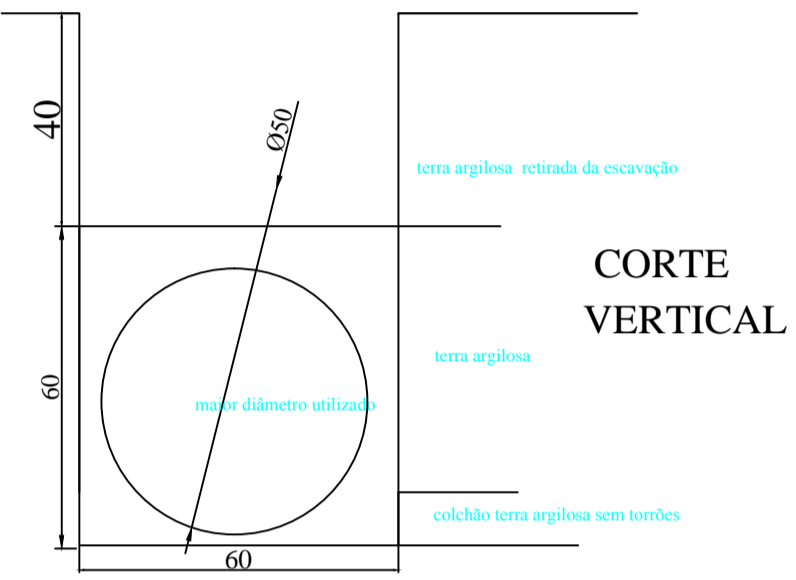
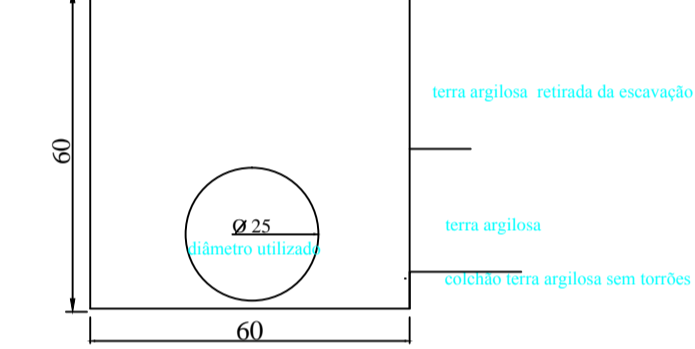


DETALHE RESERVATÓRIO

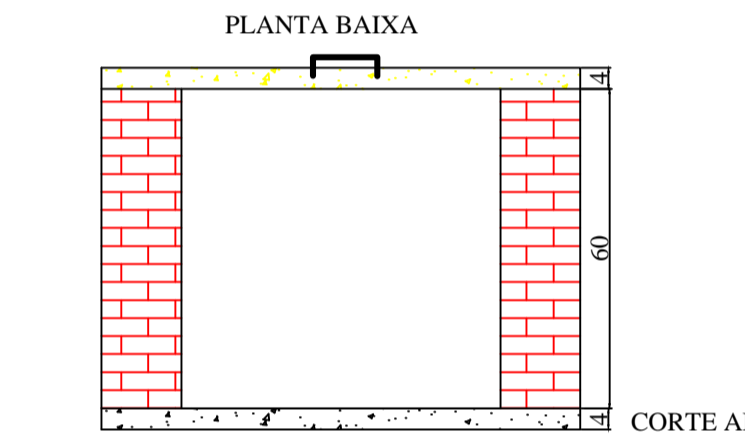
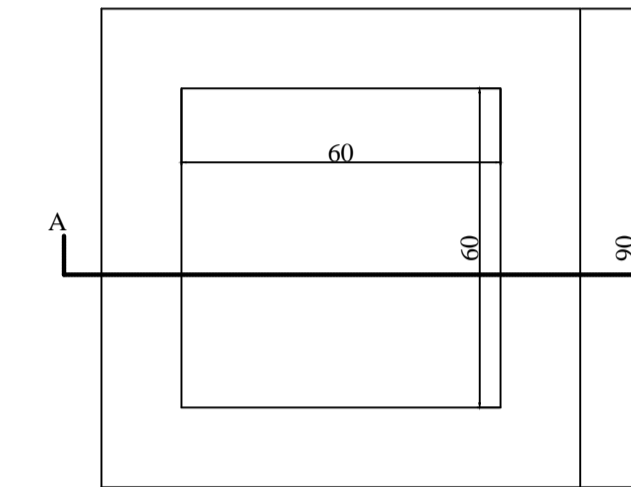
VALAS REDES ADUÇÃO E DISTRIBUIÇÃO



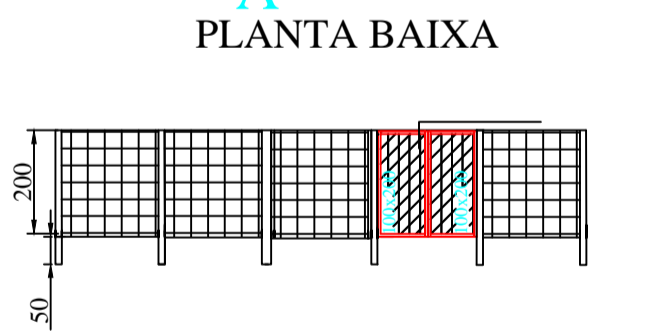
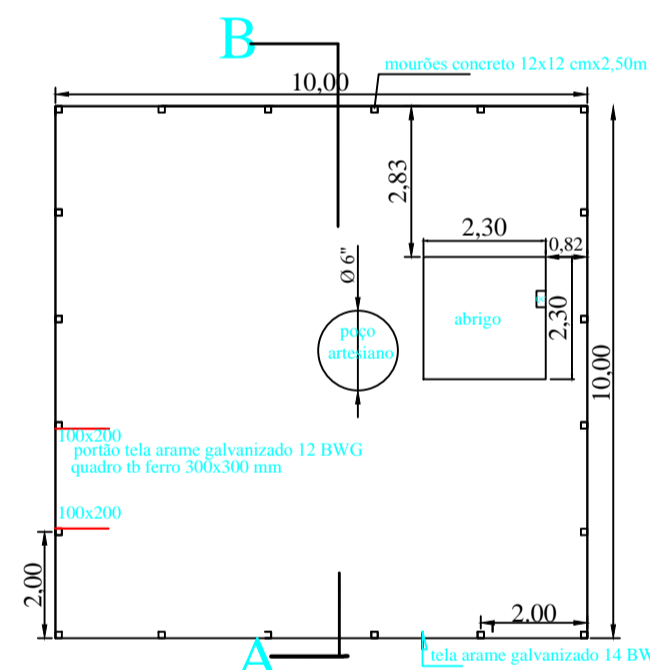
VALAS LIGAÇÕES DOMICILIARES



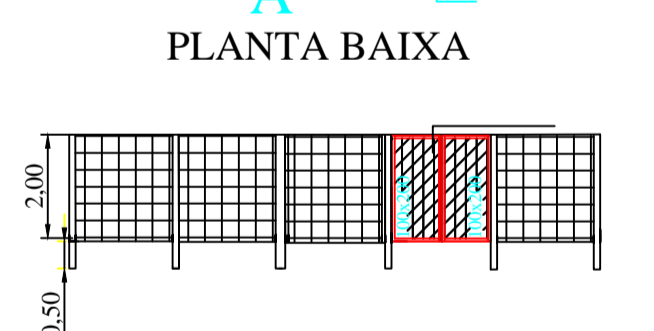
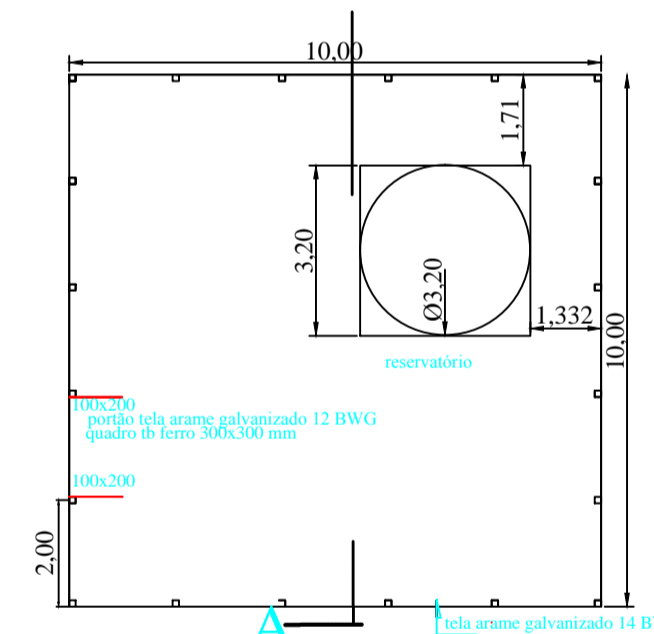
DETALHE VALAS REDES E LIG. DOMICILIARES



DETALHE CAIXAS ALVENARIA PROTEÇÃO VÁLVULAS E REGISTROS



DETALHE CERCAMENTO POÇO



DETALHE CERCAMENTO RESERVATÓRIO

PLANTA DE DETALHES		PRANCHA: 01
<b>REDE D'ÁGUA</b>		
LOCAL: ALTO CORDEIRO DE FARIAS - TENENTE PORTELA - RS		ELIDO JOÃO BALESTRIN PREFEITO MUNICIPAL
DATA: MAIO - 2015		
ESCALA: SEM ESCALA		ELIANDRO TIECKER ENGº CIVIL - CREA 180.283
EXTENSÃO TOTAL DA REDE: 8.361 m		
UNIDADE SANITÁRIA	I. A. P. A. S.	PREFEITURA MUNICIPAL